

TOM CHILDS MEMORIAL AWARD 2025

This again was included as part of the Annual Open Evening, which was held at Belmont School in September 2025. This year we had two winners one each from the junior section and the adult section, both worthy winners. The junior section was won by schoolboy Oliver Gwyther for his work in litter picking around the Sunningdale estate and the Withambrook Amenity Area. This was done originally under the auspices of the Duke of Edinburgh scheme. He donated his Tom Childs Award money to the Lincolnshire & Notts Air Ambulance.

The Adult section was won by Matthew Ash for his charity work, many of you will have seen in the press etc details of the work this has supported for the less well-off parts of our community. His donation was made to the New Life Church. Both also received a certificate to mark their achievement. This year a new annual trophy was presented to be shared six months each. This trophy has large significance to this award as it is an etched glass vase that was presented to Tom Childs himself. It came to us as a gift from Tom's family upon the sad death of his wife Kath Childs in November 2024. The vase sits on a wooden base made by our very own Cllr Paul Bakker; it has been adorned with plaques listing all the past winners. These donations of £250 each are made annually via our S137 budget. Looking forward to our 2026 Awards. the Eighteenth; -

Who do you know who deserves some recognition?

There must be numerous people out there who have done great things for our community over the past few years, we would like to hear about them. The Council prefers the nominations to come from you the residents rather than a member of the council so please let's all celebrate the great work being done.

Qualifying criteria states that whatever they have been doing must have benefitted more than one person and have some involvement within the parish.



Do you know someone in the Parish who deserves recognition for doing good deeds outside of their regular duties?

They may run a club, do charity work or many other things that benefit our Community?

Nominations for this year should be submitted by the 31st July 2026.

This Award was set up in the memory of the late Tom Childs the Londonthorpe & Harrowby "Without" Parish Council Clerk for over 27years.

As always, we wish to give credit to someone who has gone out of their way to help others in the Parish, much in the way that Tom himself did during his lifetime.

For further details please contact the Clerk Pete Armstrong on **07345075486** or at Clerk@londonthorpeharrowby-pc.gov.uk



LONDONTHORPE & HARROWBY WITHOUT PARISH COUNCIL NEWSLETTER

No 20. FEB 26

Chairs report

"It's that time of year when the weather is not so great, outdoors is a bit gloomy but the good news is that Spring is around the corner, and all the work that the parish council and its volunteers put in starts to come to fruition. The weather over the last months has not been on our side...rain, rain and more rain. But you will see despite this the teams have planted bulbs, hawthorn fences and fruit trees and all these will shortly start to come into their prime. For details read more about it in the reports of the Outdoor and Leisure Committee.

Rain unfortunately has been a feature of problems which the Parish Council has been involved with for the new housing development, Somerby Hill View. Following several instances of heavy rainfall flooding issues have confronted residents adjacent to the new development and significant involvement with the developers has taken place, along with SKDC and LCC to seek resolution of those issues. Actions will continue from the developers to resolve the flooding challenges.

We've completed a number of projects that have seen some of the play area's refurbished and tidied up as well as trying to improve the drainage on Jubilee Mount adjacent to the old Blessed Hugh More playing field.

Regarding the precept (the amount of money residents pay to cover the costs incurred by the parish council) the Parish Council have decided to keep it at the same level for next year as in 25/26. So, no increase. (See Article on page 4)

I spoke too soon last month about having a full quota of councillors, and unfortunately, we have lost Paul Nesbitt and Elvis Stooke both councillors in the Harrowby Londonthorpe Ward of the parish. Both of them through having commitments that preclude them devoting enough time to focus on the Parish Council at this moment in time. Thanks to both Paul and Elvis for their valued contributions and thank you to both of them for continuing to help the Parish Council on specific things. But this means there are opportunities for people to become Parish Councillors.

Remember you do not have to have any prior experience to become a councillor, just a willingness and enthusiasm to help build and maintain the community in which you either live or work. Please check the article on page 8 for further information. If you are interested in joining the parish council then please contact the clerk whose contact details are in this Newsletter. "

We welcome 2 new LCC Councillors and one new SKDC councillor to the parish, all councillor details can be found on page 3. I'd also like to thank Phil Gadd who recently resigned as our ward SKDC councillor for all the assistance and guidance he has given us. Alan Bowling Chair of the Parish Council.

Parish Council Calendar 2025-26

1st March 9:30 am Woodland Trust Working Party (Meet Five Gates Car Park)
11th March 7:00pm Annual Parish Meeting followed by the Parish Council Meeting @ Belmont School
13th May 7:00 pm Annual Parish Council Meeting @ Belmont School
2nd July 7.00 pm Parish Council Meeting @ Belmont School
8th July Best Kept Gardens Judging Starts
11th July Sunnifest 1:30-9:30 Berkshire Green
31st July Tom Childs Awards Nominations Close.
August Best Kept Gardens Judging Continues
9th Sept Best Kept Gardens Judging Ends.
5th & 6th Sept Belton Festival (Free Entry)
9th Sept 7.00pm Parish Council Meeting
30th Sept 7.00pm @ Belmont School "Open Evening" to include Best Kept Gardens Awards
4th Oct 9.30am Woodland Trust Working Party (Provisional)
1st Nov 9 .30am Woodland Trust Working Party (Provisional)
11th Nov 7.00pm Parish Council Meeting
30th Nov 9.30am Woodland Trust Working Party (Provisional)
2027 11th Jan 9.30am Woodland Trust Working Party (Provisional)
13th Jan 7.00pm Parish Council Meeting @ Belmont School
7th Feb 9.30am Woodland Trust Working Party (Provisional)
28th Feb 9.30am Woodland Trust Working Party (Provisional)
10th March 7:00pm Annual Parish Meeting followed by the Parish Council Meeting @ Belmont School

Appreciation

We would like to take this opportunity to thank all our generous Sponsors/ Advertisers for their continued support.

A special mention for the ongoing assistance given by Tailored Hair on Sunningdale, East Midland Electronics on Alma Park and Mr & Mrs Bradley of Londonthorpe who continue to accommodate the Defibrillator on their buildings.

We thank them on you the residents behalf.

We would also like to show our gratitude to all those people who do other marvellous things around the parish.

Londonthorpe & Harrowby "Without" Parish Council

Clerk Mr Peter Armstrong; 27 Belton Avenue ,
Grantham, Lincs, NG31 9JE New Tel 07345 075486
clerk@londonthorpeharrowby-pc.gov.uk

2

Quality Interiors

throughout the home



We offer a unique and extensive range of kitchen, bedroom and bathroom furniture covering all budgets, bringing you high quality furniture at an affordable price. Our furniture isn't just off the shelf, we offer a bespoke service for your refurbishments to be just the way you want them, including paint to order and made to measure.

We also project manage from start to finish using our qualified and highly experienced tradesmen, including all building and construction work, guaranteeing you a finish you can be proud of.

TRANSFORMING YOUR LIVING SPACE



Ruston Road, Alma Park, Grantham.
NG31 9SW
Next to GP Motorcycles
W: www.a1-interiors.co.uk
E: sales@a1-interiors.co.uk
T: 01476 405907 | M: 07517 890195



23

New Food Waste Collections

With the food waste recycling service starting in April, South Kesteven District Council state you should now have received yours.

Please don't start using them until the week before your collections start on **April 13th**. Here is the timetable for action:

- Monday, **April 6th**: start using your caddies
- Week commencing Monday, April 13th: first food waste collection, on your usual bin day

Cabinet member for Environment and Waste, Cllr Rhys Baker, said: "You'll get everything you need to take part.

"It may take a little getting used to, but by recycling your food waste in this new way, you will help cut down the amount of waste that ends up at our Lincolnshire Energy from Waste disposal facility.

"Separately collected food waste will be sent to an anaerobic digestion facility in Lincolnshire where it will be turned into fertiliser for agriculture and biogas, which is used to generate renewable electricity for homes.

"We will collect food waste every week – simply leave your caddy at the kerbside on your normal bin collection day. This will be an extra collection in addition to your usual collections. If you have assisted bin collections, this also applies to your food waste caddies.

"There is no charge or subscription in order to participate in the food waste collection service. "For more information, please visit the SKDC websites www.southkesteven.gov.uk/foodwaste and follow the council's social media channels for regular updates."

SKDC should by now have supplied all households with a small five-litre grey kitchen caddy, for food waste storage indoors; a black 23-litre outdoor caddy, to be left for kerbside collections; an initial supply of caddy liners to keep them clean and allow easy emptying; an information leaflet.

The indoor caddy should be emptied regularly into the larger outdoor one. SKDC advises that the indoor caddy can also be lined old plastic bags: old bread bags, plastic shopping bags, newspaper or kitchen roll all work just as well. Caddies can be washed when necessary; the indoor caddy is dishwasher safe up to 60°C.

What to put in your caddy

All food intended for human or household pet consumption, such as: Meat raw and cooked, including any bones, fish and shellfish – raw and cooked, including bones and shells.

Fruit, salad and vegetables - both raw and cooked, including peelings

Dairy products such as yoghurt, cheese, eggs and eggshells, bread, cakes and pastries. Rice, pasta and beans, any meal leftovers. Tea bags and coffee grounds, Tinned and dry pet food (removed from all packaging), small amounts of gravy, sauces or custard left on food.



What can't go in your caddy:

Food packaging, Liquids such as milk, any material that is not food waste

Your Councillors at March 2026

Your Councillors

Sunningdale Area:

Chair: Cllr Alan Bowling 07710 039495

cllrabowling@londonthorpeharrowby-pc.gov.uk

Cllr Paul Bakker 07961 522113

cllrpbakker@londonthorpeharrowby-pc.gov.uk

Cllr Linda Page 07432 695716

Cllrlpage@londonthorpeharrowby-pc.gov.uk

Cllr Scott McGrane 07875010952

cllrsmcgrane@londonthorpeharrowby-pc.gov.uk

Londonthorpe & Harrowby Villages

Cllr Carol Markwell 07733 300742

cllrcmarkwell@londonthorpeharrowby-pc.gov.uk

Cllr Yolanda Martin 07796 848676

cllrymartin@londonthorpeharrowby-pc.gov.uk

Harrowby Lane & Alma Park Area

Vice Chair: Cllr Geoff Parnham 01476 401873

cllrgparnham@londonthorpeharrowby-pc.gov.uk

Cllr Avril Gregory 01476 568392

cllragregory@londonthorpeharrowby-pc.gov.uk

Cllr Richard Keeler 07779 955128

cllrkeeler@londonthorpeharrowby-pc.gov.uk

Salterford-Hillside Area Etc:

Cllr Roland Wright 07863 893952

cllrrwright@londonthorpeharrowby-pc.gov.uk

Cllr Paul Bavin 07976 792398

cllrpbavin@londonthorpeharrowby-pc.gov.uk

Your other authority councillors are listed below:

South Kesteven DC Belmont Ward Cllrs: Cllr E Stooke 07288-320003

elvis.stooke@southkesteven.gov.uk

Cllr. Richard Litchfield richard.litchfield@southkesteven.gov.uk

Grantham East LCC Councillor Cain Parkinson 3 Lynden Ave Tel 07889

97902 cllrc.parkinson@lincolnshire.gov.uk

St Vincent's Ward LCC Cllr Carl Edgoose-Zagorsky Mob 07974 342648

cllrcparkinson@lincolnshire.gov.uk

For Any Further Information Please Contact The Clerk; Pete Armstrong

New number = 07345075486 or at

E-Mail: clerk@londonthorpeharrowby-pc.gov.uk

Please aware the Clerk works part-time, so there may be some delay with any replies.

Parish Council Precept 2026-27

The good news is that the parish council's total precept this coming year will stay at £34,000.

Unfortunately, last year we were forced to increase the total by £1000 to cover the increased costs incurred. This was due to the Chancellor's changes to the National Insurance. This affected us in several ways as all our brought in services rose in price.

As more properties are developed and occupied within the parish we hope to maintain this figure for a couple more years at least.

This year we have been fortunate enough again to have received some grants towards projects totalling nearly £5200, along with this we have received £430 in Donations. This is made up of donations towards adverts in the Newsletter and a generous donation towards the management of trees at the Hills & Hollows.

The Grants came from the South Kesteven's UK Shared Prosperity Fund for which we are extremely grateful. The main part £5000 was used to improve the ROW footpath from Harrowby Hall to the Jubilee Mount/Blessed High More Site. The other is being used to put a fence around the New Community Orchard. (See *Leisure & Outdoor & Bridge End Grove reports*).

The councillors who are guided by the Clerk/Responsible Financial Officer (RFO), have in most cases managed to remain within their set budgets for all areas.

We are expecting that our bought in services such as the Insurance, Salaries and Newsletter printing will increase this year, but we have allowed for this within our budget.

Other than the precept a smaller pot of income came from a grant from SKDC towards the cost of our Community Cleaner and Donations.

We believe this precept will enable us to meet our normal expenditure on services and allow us to continue with all the projects already in the pipeline. Parish councillors are keen to provide all the services that they are required to at the best possible rate. As you will continually see throughout this newsletter, we have several responsibilities that require resources annually. Our forward planning for the years 2027/28 and 2028/29 indicates that although we cannot predict accurately what increases will be needed during that period, some small adjustments will be required.

In these uncertain times we will still be endeavouring to keep any increases to a minimum.

Things we have highlighted before about how the government is expecting the parish to grow, means we are still not fully able to assess how this will affect our future budgets. With building work already commenced and couple of houses sold on Somerby Hill, there may be more homes in the parish by the next budget setting procedure in November

Elsewhere in this newsletter you will see where some of the precept has been spent this year.

Our Parish Clerk/RFO Pete Armstrong always keeps a close eye on our spending and councillors receive a detailed update at each meeting which is then agreed and signed off by the councillors. This of course enables the budgets to be adhered to.

Useful Numbers

Anglia Water 0845 7145145

Gas 0800 111999

NHS Direct 08454647

NHS non emergency 111

Power Cuts Emergency 105

Electricity 0800 0568090

Grantham Hospital 014767 565232.

Local Policing

Police non emergency 101

Police Station 0300 111300

Our Grantham East team

Senette-Crofts, Jennifer

email Jennifer.Senette-

Crofts@lincs.police.uk

SKDC Switchboard 01476 406080

For Dog Fouling-Abandoned Vehicles,

Fly Tipping etc 01476 406279

For Collection of Refuse-Recycling-

Green Waste Etc. 01476 406360

Lincs C.C. 01522 552222

LCC Highways Potholes, Street

customerservices @lincolnshire.gov.uk

Lighting etc 01522 582070

E-mail- www.Fixmystreet.com

Benefits Agency

To Claim Benefits is 0800 055 6688

Benefit Enquiries is 0800 169 0310

Local Jobcentre is 0800 169 0190

Tax Credits Helpline 0345 300 3900

Universal Credit Enquiries 0800 328 9344

Pension Credit Apps 0800 99 1234

Pension Centres 0800 731 0469

Childline 0800 11 11

Citizens Advice 08444 994199

Crimestoppers 0800 555111

Public Transport

Centrebus 01164 105050

Call Connect 03452-343344

National Rail Enquiries 08457 484950

Traveline 0871 2002233

TAILORED HAIR

Hair Salon

Sunningdale

For Appointments

Please Ring

01476 568021

Hours of Business

Tue 9.00am to 6.00pm

Wed 9.00am to 7.00pm

Thurs 9.00am to 5.00pm

Fri 9.00am to 5.00pm

Sat 8.00am to 2.00pm

East Midlands Electronics

**Repairs to most makes
of Television**

**Including Plasma, LCD
also DVD**

and Microwaves

Tel 01476 576160

eastmidlands.electronics

@ntlworld.com

www.

eastmidlandselectronics.tv

Belmont Community Primary School – Celebrating 50 Years

This school year marks a very special moment in Belmont Community Primary School's history as we celebrate our 50th anniversary. The school first opened its doors in September 1975, and for five decades it has been at the heart of our community, supporting generations of children and families.

As Headteacher, I feel incredibly proud and privileged to be leading Belmont during this landmark year. Our school has always stood for care, ambition, and community spirit, and those values remain as strong today as they were when Belmont was founded as a County School.

It has been particularly special to hear from Fred Long, Belmont's original Headteacher, who led the school from 1975 to 2000. Fred very kindly sent the school a card with his best wishes for our 50th anniversary.

In response, our Year 6 pupils have written letters back to him, sharing what Belmont is like today and what the school means to them. It has been a wonderful way to connect our current pupils with Belmont's history.

Throughout the year, we are marking the anniversary in meaningful and memorable ways. These include inviting former pupils and staff back to school, holding a 1970s themed day, giving every child a commemorative pin badge, opening and replacing our time capsule with items that reflect life at Belmont in

2025, and planting a special anniversary Oak tree in our grounds, kindly donated by the Parish Council.

Belmont has always been about more than bricks and mortar — it is about people, relationships, and shared memories. As we look back with pride and forward with excitement, we are proud to celebrate 50 years of learning, laughter, and community.

The Parish Councillors would like to take this opportunity to thank the Belmont school for allowing us to use their facilities for all our meetings. At present we have no other suitable building within the parish.

Belmont Community Primary School
Harrowby Lane, Grantham,
NG31 9LR. 01476 567939

www.belmontprimary.com

Head Teacher: Jamie Allsopp

'Every Child Matters. Every Moment Counts'

Belmont is a welcoming and aspirational school, with a learning environment that promotes independent learners and encourages children to achieve their full potential.

We offer a breakfast club and after-school club, providing wraparound care from 7:45am to 6pm, a wide range of extracurricular activities and much, much more.

Contact the school for further Information.

Section 137 Monies.

Your Parish Council has a pot of monies set aside for aiding good causes within the parish and are explained below.

In 2025-26 this has been used to assist Lincs Air Ambulance £250 & New Life Church £250 through the Tom Childs Award. Along with that we supported the Royal Life Saving Society £200 who ran or CPR training for us, "Sunnifest" the Sunningdale Festival received a donation of £200 towards the cost of their toilets. This is along with St Johns Church Londonthorpe who received their annual £250 towards their Grass Cutting.

Our usual limit spend is between £1000-£1500 for this element of our budget.

Anyone can apply for these grants, with a written reason and explanation of the good it will do for our parishioners.

Under Section 137, expenses that may be incurred by a parish council include, but are not limited to:

- ✓ **Donations to Charities:** The council might decide to make a donation to a local charity that provides services benefiting the local community.
- ✓ **Grants for Local Clubs:** Supporting local youth clubs, senior citizen clubs, or other community groups that offer beneficial services or activities to residents.
- ✓ **Awards and Prizes:** For local competitions, perhaps to encourage community spirit, art, or environmental awareness.

Examples where Section 137 cannot be used.

- ✗ **Unrestricted Specific Statutory Power:** Where the Council has a specific power to spend, that is not restricted.
- ✗ **Statutory Prohibition:** Where there is a statutory prohibition on the Council carrying out a particular function.
- ✗ **Benefit of One:** S137 cannot be used to benefit a single individual. We can, however, provide a donation to a charity to which the individual belongs, as the benefit will be to "some" of the community.

ALMA PARK FISH BAR

Opening Hours:
TUE: 16:30 - 19:00
WED - THU: 11:30 - 14:00
WED - THU: 16:30 - 19:00
FRI: 11:30 - 14:00
FRI: 16:30 - 20:00
SAT: 11:30 - 14:00
SAT: 16:30 - 19:00

GLUTEN FREE : EVERY FIRST TUESDAYS OF THE MONTH
DELIVERIES AVAILABLE VIA UBER EATS, TELEPHONE AND FACEBOOK ORDERS.

01476 594173
<https://www.facebook.com/almaparkfishbar/>

13 ALMA PARK ROAD
GRANTHAM
NG31 9SX

Leisure & Outdoor Committee

Councillors on this Committee have again been busy overseeing the outdoor and leisure areas of the parish.

Recommendations have been made to the full Parish Council to enhance and maintain these assets and budgets set as a result.

The play areas in the parish have benefitted substantially from the new metal equipment which have replaced the old obsolete wooden items and all five play areas are being well used and enjoyed by the community.

Recommendations for some low-risk adjustments identified from our annual inspection report have been fully implemented.

At the Londonthorpe Amenity Park plastic spikes have been installed on the top of the swings to avoid the annoying problem with bird droppings on the swing seats. All the hedging has been trimmed back and some new hedging planted to fill the gaps in the roadside hedge. We are pleased to see the park being visited much more often now.

Many thanks go to the volunteers in the village who have planted approaches.

We look forward to the Spring display.

At the very popular Withambrook Play Area and Multi-Use Games Area off Ruston Road work to restore the correct ground level under the roundabout has been completed and the entrance gate repaired after it had been vandalised.

All the fruit trees in the Community Orchard on this site are growing well. Plans are in place to fence it off in order to keep dogs out but with an entrance gate for public access. We are hoping to see the first fruits this autumn.

At the Bridge End Road play area, the swings have been repainted, and options are currently under consideration in order to replace the dilapidated fence at the top of the site. (We are waiting to see what is planned for that area within the Spittlegate Heath Garden Village Planning Application)

We are delighted to confirm that the Council application to SKDC for an Asset of Community Value registration for the Blessed Hugh More field was successful and has now been renewed for another five years. This is an especially important asset to the community, and the Parish Council is determined that full access and enjoyment is maintained for the community now and in the future.

Work has been completed on improvements to the adjacent rights of way pathway on the hill past the Parish Council owned Jubilee Mount site leading to the pathway to Harrowby Hall.

Continued on page 7



LOCAL GOVERNMENT REORGANISATION CONSULTATION

The 4 proposals in this consultation were made by the following councils on 28 November 2025:

This consultation asks questions about each proposal to help inform the assessment of the proposals.

Please take time to look at this and make your feelings heard by answering the questions in the consultation.

North Kesteven District Council and South Kesteven District Council proposed 4 unitary councils. These would comprise the current areas of:

Unitary Authority 1: North Kesteven, South Holland, South Kesteven

Unitary Authority 2: Boston, City of Lincoln, East Lindsey, West Lindsey

North East Lincolnshire to remain unchanged

North Lincolnshire to remain unchanged

This will be the one the Parish Council will probably be supporting if agreed at our March Meeting, as it makes much more sense than any of the others.

In this we would be linked with the two other districts in the southern part of the county, travel between points would not be too difficult. These together are also some of the most productive in maintaining food supplies to the country.

Unitary Authority 2 would then cover the most central parts of the county, with NE Lincs and N Lincs covering the northern parts of the county.

b. Boston Borough Council, East Lindsey District Council and South Holland District Council proposed 2 unitary councils. These would comprise the current areas of:

Northern Lincolnshire: Lincoln, North-East Lincolnshire, North Lincolnshire and West Lindsey

Southern Lincolnshire: Boston, East Lindsey, South Holland, North Kesteven and South Kesteven

c. City of Lincoln Council proposed 4 unitary councils. This includes a request to split existing district council areas between the proposed new councils. These would comprise the current areas of:

Lincoln City: Lincoln, plus 12 wards from North Kesteven and 7 wards from West Lindsey

Rural Lincolnshire: Boston, East Lindsey, South Kesteven, South Holland, plus North Kesteven minus 12 wards and West Lindsey minus 7 wards

North East Lincolnshire to remain unchanged

North Lincolnshire to remain unchanged

d. Lincolnshire County Council (supported by North East Lincolnshire and North Lincolnshire) proposed 3 unitary councils. These would comprise the current areas of:

North East Lincolnshire to remain unchanged

North Lincolnshire to remain unchanged

Lincolnshire: Boston, City of Lincoln, East Lindsey, North Kesteven, South Holland, South Kesteven, and West Lindsey

e. West Lindsey District Council did not submit a proposal.

Jubilee Mount Path Improvements

This was a project to improve access and help alleviate the flooding issues. Last autumn we aimed to improve the drainage on the two paths through the Jubilee Mount area. This small parcel of land sits above the playing field of the former Blessed Hugh More School. One part is owned by the Parish and the rest we have on a long-term lease from SKDC for a peppercorn rent. Our contractor dug multiple channels across the paths leading to small soakaways on the downhill side. These were all filled with gravel and a wooden sleeper installed on top to improve stability. Some work was done to try and keep water from flowing onto our path from the track higher up.

A large amount of fly-tipped garden waste was removed from the bottom of the site, by the Sandringham Drive entrance, and another soakaway has been installed there and covered with bark chippings. Eighty percent of the project costs have been covered by a £5000 grant from the South Kesteven's UK Shared Prosperity Fund with the Parish paying the balance from our projects budget.

So far this winter it appears to have been a success with much less water flowing down the path. Unfortunately, we can't do anything about the spring that emerges by the Sandringham Drive entrance which, when in full flow, overwhelms the drain installed a few years ago. Please do not fly-tip any waste in this area as it will have to be removed and the cost incurred will lead to an increase in the annual precept on your council tax bill.

Thank you. Cllr R Keeler



Sunnifest

26 **SAVE THE DATE!**

PARTY ON THE GREEN
Behind Lytham Close to Berkshire Drive

LIVE MUSIC, FUN & GAMES

SATURDAY 11th July 2026

1.30pm ~ 9.30pm

Email: sunnifest2022345@gmail.com

L&O continued from page 6:

First reports have been favourable, but it will be closely monitored. This project was assisted financially through a successful grant application to SKDC. The rewarding Millenium Garden partnership with the Gardening Club children at Belmont Community Primary School resulted in a very colourful display on Kenilworth Road corner last summer and we look forward to the spring flower bulb display in due course.

We continue to have regular meetings with the National Trust management at Belton House for updates on their activities. The free public access allowed for walking in the parkland area only is a valuable asset for our parish and we thank parishioners for always keeping their dogs on lead.

The working party volunteers have continued their maintenance work at the Hills and Hollows to ensure full access to the rights of way pathways and the Woodland Trust volunteer group consisting of both Councillors and volunteers continue their valuable maintenance work in the local woods; Newsletter. If you feel you would like to get involved in any of our volunteer activities, then please contact the Parish Clerk on his contact details in this Newsletter. Geoff Parnham - . .



The Millennium Garden on Kenilworth Road/Harrowby Lane Junction, This is still being done as a Community Project by the children of Belmont School Gardening Club.

This past autumn the Key Stage 1 Children have been working with our Clerk Pete Armstrong and the teacher Mrs Dani Pallier to run the club which has anywhere between 6 & 8 attendees each week. They have planted bulbs and prepared ground ready for the planting up in the summer of 2026.

As the summer planting lasted so long into the autumn it was decided not to plant up with winter flowering species. Instead, we will wait for the fantastic display of bulbs to appear in the spring. What they also did though was to pot up some Hyacinths to take home to their parents at Christmas.

Before each planting season they cleared the garden of the old bedding and removed it to their compost heap, thus learning about recycling and composting. On the planting and main clearing days, the clerk is ably assisted by Cllrs Bakker & Parnham. All plants/seeds/compost etc are supplied through the Parish Council so no cost to the school. They have now progressed and do their own show bed outside the school office; they continue to look after this with each passing season. learning their gardening skills very early in their lives. This we hope will give them a lifetime hobby.

Woodland Trust Working Party Report – Feb 2026

This jointly run working party group between the Woodland Trust and the Parish Council has had a successful autumn & winter programme so far, with several new members joining. We have also lost a couple of members who now find it too much for them. One of them Cllr P Bakker one of the original members and deputy leader has decided to step back as he feels he can't give 100%. We sincerely thank him for all the work he has done over the years. Cllr R Keeler has now taken his leadership training and supports the group leader Pete Armstrong.

This season our focus has again been on the car park side of Londonthorpe Woods off Five Gates Lane. In October as last year we again pruned back the dog rose and hawthorn planted around the car park fence. It grows so fast this looks like being a annual occurrence. November saw us working our way around the circular track as we did last year, but crown balancing by cutting back on the reverse side of the trees from last year. We also cleared back any self-set species, especially hawthorn and blackthorn, to 2 meters from the path. On this occasion three members were also repairing paths where cracks had appeared making them a possible danger to the public. In December we continued with work balancing out the path side trees.

Unfortunately the January meeting was cancelled due to the forecast high winds and rain. (This never materialised, the weather people got it wrong again!)

This work is done for the benefit of all the many users of this most valuable asset to our community. This area gets more and more popular, year by year we see far more people using this facility than we ever use too.

There are also other volunteers working on these sites, some clearing up dog mess, some litter-picking and others leading very informative walks teaching about the history of the area and the wildlife that abounds. We thank them all. Our final session of this winter is on Sunday 1st March 9.30am to 12.30pm, please contact the parish clerk if you would like to join us as a volunteer.

Clerk P Armstrong Volunteer Leader.



Councillor Vacancies.

At present we have two vacancies both on the ward covering the Sunningdale and Harrowby Lane areas.

We would very much like to fill these by co-option at the earliest opportunity.

If you are interested in helping others this is a very good opportunity to get involved.

Contact the clerk for further details.

8

The Power of Community

I think that most of us would agree that 2025 was a tumultuous year. The rising cost of living, a struggling NHS, climate disasters and global unrest have left many of us feeling anxious, insecure and fearful for the future. Our mental health has taken a battering. At times like these we look more than ever to the support we receive from family, friends and local community.

Our Wellbeing Cafe in the Ascension Church Hall on Edinburgh Road is a safe space where it's okay not to be okay. Open every Monday from 10am-12.30pm there is always a friendly welcome, a listening ear, table games, crafts, mindfulness activities and delicious homemade cakes, with homemade soup and rolls in the winter months. It's all free so everyone can access it and those who wish are welcome to make a donation. It has become increasingly popular as people find friendship and support in a warm, caring environment.

We have also begun partnering with the National Trust at Belton House to offer free nature walks around Belmont Tower and Londonthorpe Woods which end at Londonthorpe Church with hot drinks and homemade cake. Walking in nature does wonders for our mental health and wellbeing. You can book a place on these via Belton House and the National Trust websites.

Finally, we have noticed an increasing trend towards direct cremations without funerals. This can leave people feeling like they have not been able to say goodbye to their loved ones or remember them in any special way. If you would like us to mention loved ones who have died in our Sunday prayers, or would like to light a candle for them or leave a message on our memorial tree in church, please feel free to contact me at the email below.

We can also offer bespoke Memorial Services.

If you would like to know more about the services and community activities we offer, including a Toddler Group, Quiz Nights, and a 70s Night on Valentine's Day, check out our Facebook page - Church of the Ascension Grantham- and our website <http://www.achurchnearyou.com/Grantham-Harrowby-Londonthorpe>

And if you are a pet lover, why not bring your pet to our new Pet Blessing Service at Londonthorpe Church on the first Sunday in October at 3pm?

If you would like to enquire about baptisms, weddings and funerals, you are welcome to contact me on: 01476 574145 or email me at rev.samparsons@gmail.com

We realise that these are challenging times. But whatever you may be going through, you are not alone. As your parish church, we are here for you. As we journey through 2026 may we all find comfort and hope in the support that local community can bring.

Rev. Samantha Parsons, Vicar of the Church of the Ascension and St John the Baptist's Londonthorpe

Service Times:

Church of the Ascension, Edinburgh Rd

1st Sunday of month	10am Holy Communion
2nd Sunday of month	10am Sunday Worship with Sunday Club for children
3rd Sunday of month	10am All Age Family Service
4th Sunday of month	10am Holy Communion
5th Sunday of month	10am Holy Communion

All services followed by refreshments

St John the Baptist's, Londonthorpe

2nd Sunday of month	3pm Holy Communion (4pm from April-Oct)
4th Sunday of month	3pm Hymns of Praise (4pm from April-Oct)

All services followed by refreshments

We also hire out our large hall, with kitchen and disabled facilities, at very competitive rates. Contact our Hall Bookings Manager Sally at ascensionhallhire@yahoo.com

17

Rising Stars

Ascension Baby & Toddler Group
Every Tuesday during Term Time
9.30am - 11.30am

Sensory Corner • Toddler Gym
Toys • Crafts • Singing
Storytime • Healthy Snacks

Ascension Church Hall
Edinburgh Road
Grantham, NG31 9QZ

For pre-school children and their parents or carers
FREE with voluntary donations

Parish Planning Report 25-26

We have a policy of trying to deal with any potential developers within the parish at the very outset of an application, this then enables us to have a larger platform to voice our opinions.

This is proving extremely useful at the present with the Bloor's estate on Somerby Hill. Here we have been able to raise the problems re ongoing flooding from the site. In the future, plans for the building of a significant number of new properties within the parish are being discussed with the landowners. These will be over at least the next 25 years and features within the local plan produced by SKDC. The parish council has been consulted by the organisations wishing to submit applications including Buckminster Estates for the Spittlegate Garden Village (which is mooted for commencing in 2028 and taking some 25 years to complete <https://buckminster.co.uk/spitalgate-heath-garden-village/>). We've also spoken with DIO (Defence Infrastructure Organisation) about the proposed development at the Barracks, but at this stage whilst in principle it is still proposed to close the barracks the date has slipped from 2024 to possibly 2030. We have heard that there are plans to scale back the size of this development and to try and keep the woodland Diamond Jubilee Wood, 88,000 trees planted as part of the Queens Jubilee Wood project) there largely intact (<https://www.gov.uk/government/news/princess-plants-last-tree-at-armys-new-wood>) but we await further information around this. And late last year we were contacted by and met with another developer, David Wilson Homes who are considering in the future (probably earliest 8-10 years from now) developing on the land between Turnor Rd and Harrowby Lane. This is not on the Local Plan for the area. All these developments would bring approximately an additional 9,000 homes. A major area of concern we have around all these developments is the ability of Anglia Water to manage the sewage generated because at this time there is no projected development of Grantham's plant at Marston in their plans. Clearly at the point of the applications being officially submitted more detail will be forthcoming.

During the year we have had many smaller developments put forward, most councillors and neighbours have no problems with. One though that has caused us concern is the continued application for a new build at Harrowby Farmyard development. All concerned believed this to be out of keeping and overbearing for this development.

Another that was objected to, was the application to build a dormer bungalow in the rear garden of a home backing on to Harrowby Lane. This was passed by planning, but our concerns about Road Safety and overcrowding still apply.

When looking at any application we consider the effects this will have on the parish as a whole.

Hills & Hollows

The area continues to develop at a pace despite the sometime drought and other times flood conditions. Each autumn you can see the extra growth made throughout the year. This extra growth is particularly seen on the hedges and the undergrowth which obviously requires maintaining. We are very lucky here in that the wonderful Tony Parker once again has volunteered many hours to cut the hedge for us. Cllr Richard Keeler has again been busy doing a lot of strimming work this winter. The work done by Richard is keeping the self-set hawthorn from taking over our area as it is on a neighbouring plot to ours. We have contacted the owner of that land and asked for work to be done to cutback the hawthorn blocking the access track.

Volunteers have assisted in other tasks within working parties doing other maintenance tasks. Especially removing some overbearing Cherry trees. Cllr Paul Bakker and the Clerk have also undertaken some maintenance tasks over the year. We thank them all for their assistance.

We have again experienced some vandalism this year; to one of our gates and a fence. Another continuing issue is the illegal use of motorbikes along the paths of the parish owned section and neighbouring sites. We understand one bike has been seized by the police. Please report any motorbikes using the area to the non-emergency 101 number if you feel safe to do so.

We normally hold 1 or 2 working parties per year, so if you are interested in helping out, please contact the Parish Clerk.

We have again been very lucky to receive donations towards the upkeep from people who have adopted trees within the area, we thank them most sincerely for this. Article by the Clerk P Armstrong

Replacement Defibrillator for Sunningdale Estate.

The pads for the defibrillator located outside the shops on the Sunningdale Estate were due to be replaced recently but were no longer in stock for that brand of machine. We therefore decided to buy a new defibrillator from another supplier where replacement pads and batteries are more readily available.

Pads must be replaced after being used and every 3 years if not. Batteries typically need changing every 4 to 5 years. We purchased the new one from London Hearts, the leading defibrillator charity in the UK. They have helped supply over 25,000 units across the UK at discounted prices. This is the second time we have used them as they have provided good service in the past. The cost of these Defibrillators can range from £700 to over £1000, so is no small investment but well worthwhile.

There are also Parish Council provided defibrillators situated outside the shops on Alma Park Road and on High Road in Londonthorpe. If someone has a heart attack dial 999 and the ambulance service will direct you to the nearest defibrillator and give you the code to open the box. Then follow the instructions that the unit gives you and those given by the 999 call handler.

Cllr R Keeler

richard malley
floordesigns

contemporary and traditional
carpets & hard flooring

01476 564718
malleyfloors.com

Unit 15 Partnership House, Withambrook Park, Grantham, NG31 9ST

Grantham@malleyfloors.com

Opening hours; Mon to Wed & Fri 9.00 - 4.30. Thurs - closed. Sat 9.00 - Noon

Projects Completed in 2025-26

This year has seen monies spent on various projects, including the following: We purchased another two fixed **Speed Indicator Devices** one which will be situated in Londonthorpe the other will be situated on Belton Lane. Both are solar powered so do not need to be taken down for recharging. At present we are waiting for LCC Highways to erect the necessary posts so that they can be brought into action.

We also completed our project to make the **Rights of Way Footpath** through the Jubilee Mount area safer, we were lucky that we were able to again tap into the Grants Funding available through SKDC. This reduced our costs to approx. 20% of the project.

By the time you receive this newsletter the work to complete the **Community Orchard fencing** should also be completed.

Blessed Hugh More Site

During the course of this year, we became aware that South Kesteven DC were planning to cover the whole of our parish side of the site in trees. We were not approached at any time although as we hold an Asset of Community Value on the site we felt we should be. We have also spent a considerable amount of money on improving access from our parish, something SKDC never did.

One anomaly was that there was to be no planting on the Harrowby/Grantham Ward side! We contacted SKDC about this and why we had been excluded from any discussions. To say the replies were unsatisfactory would be an understatement as it took approx. four months to actually hear from the SKDC Cabinet Member Chair responsible for this area. We did though hear from the officer concerned and our SKDC Cllr E Stooke who is working on this with us. We have heard that a delay has been caused as SKDC are trying to get legal advice around a covenant that is on the land held by Lincolnshire County Council.

It must be said at this point, we are **not** against some tree planting but, we would not want the whole area covered. We want to keep the area reasonably open to allow residents to undertake the recreational pastime of their choice. This could be jogging, walking their pets, ball games or even Yoga as we have witnessed on the site. We are also contemplating putting in some Fitness Equipment.

We believe covering the site in trees could in future be a site for antisocial behaviour, it is also close to residential properties some of which are lived in by some of our older residents.

The original plan was amended to cover less of our side and some of Harrowby Ward which is slightly better. Having looked at the proposed species of trees to be used we are not happy they are the right choice for this area. We will be putting more thought into this aspect of the plan when we have had proper discussions with SKDC.

It is hoped a meeting with the SKDC Cllrs for our ward, Grantham/Harrowby Ward and the Chair of the committee will be taking place on site mid-February. Unfortunately too late to be reported in this newsletter.

Toad Patrol comes to Five Gates Lane

A new volunteering opportunity is coming to Five Gates Lane this spring. The Five Gates Lane Toad Patrol is launching for the first time and is looking for local people willing to help toads safely cross the road during their seasonal migration.

As evenings become milder, common toads begin their annual journey back to breeding ponds they have returned to for generations.

At Five Gates Lane in Belton, this journey involves crossing a busy road, putting many toads at risk.

From mid-February, volunteers will be heading out in the evenings to help change that. The newly formed patrol will help toads cross the road safely and continue their journey. Wearing high-visibility clothing and using torches, volunteers gently carry toads across the road in the direction they are already travelling.

Volunteering is simple, flexible and rewarding.

Patrols usually take place on mild, damp evenings when toads are most active, and helpers can volunteer for as little or as much time as they like. No previous experience is needed, just a willingness to help and an interest in local wildlife.

The common toad is a familiar but increasingly vulnerable species. Because toads move slowly and often travel at night, roads pose a serious threat during the breeding season. Helping them cross safely can make a real difference locally.

The Five Gates Lane Toad Patrol is part of

Toads on Roads, coordinated by wildlife charity **Froglife** and supported by ARG UK.

Anyone interested in taking part during this first season is warmly encouraged to get involved. For more information, visit fivegatestoads.co.uk or email beltontoadpatrol@hotmail.com.

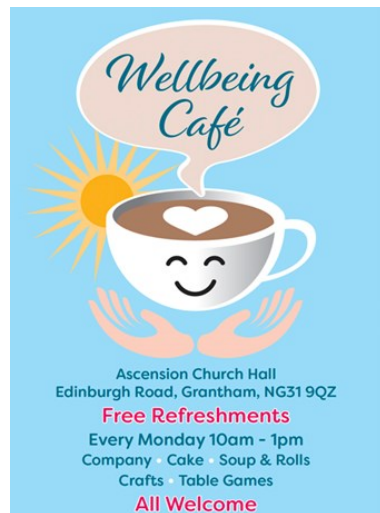


**For Any Further Information Please Contact
The Clerk; Pete Armstrong**

New number = 07345075486 or at

E-Mail: clerk@londonthorpeharrowby-pc.gov.uk

Please aware the Clerk works part-time, so there may be some delay with any replies.



Introduction of our New Councillors on Lincolnshire County Council

Dear all,
My name is Cain Parkinson, and I'm your County Councillor for Grantham East on Lincolnshire County Council. I've lived in Grantham my whole life and am thrilled to represent our area.

At 26, I'm one of the younger councillors, and I got into politics to show that young people can make a real difference—bringing fresh energy and perspectives to issues that affect us all.

My role involves serving on several committees, including the Children's and Culture Scrutiny Committee, the Overview and Scrutiny Management Board (as Vice-Chairman), the Greater Lincolnshire Combined County Authority Overview and Scrutiny Committee, and the full Council. This means I help oversee education, children's services, culture, and broader county priorities like transport, social care, and community support.

I'm committed to putting people first: listening to your concerns, advocating for fair solutions, and championing local needs—from better roads to safeguarding our young people.

Please get in touch if you have any issues or ideas—I'm always happy to chat and help however I can. You can reach me via email or on WhatsApp.

Thank you for making our parish such a great place to live and I look forwards to working with you all.

Kind regards. **Cain Parkinson Grantham East Electoral Division**

"Hello, I am Carl Edgoose Zagorskiy your County Councillor for Grantham South I had the privilege of being elected on 1 May 2025. I have lived in the ward for over 30 years and have seen a lot of changes in Grantham. My role is to be a strong link between you, the residents, and the council. I'll be focusing on making sure our local services are effective, advocating for improvements in our parks and community spaces, and helping you resolve any issues you might have. I'm committed to serving our community and working with you to shape the future of Grantham. As well as being a County Councillor, I am the Vice Chairman for the Planning and Regulation Committee, sit on the Highways and Transport Scrutiny Committee and the vice Chairman for Definitive Maps and Statement of Public Rights of Way. Please don't hesitate to reach out if there's anything I can help with. Best wishes Carl



Explaining the Wards

In our parish we have two Wards. One is the Harrowby, Londonthorpe and Spittlegate ward which as the name applies includes the villages, This also covers the main part of the parish including Sunningdale, Polygon and Kenilworth Rd estates. We can have 11 councillors for that area. (We have two vacancies) The area below the Army Camp is in our Bridge End ward and includes a part of the Eatch's Estate, part of the Bridge End Estate and the new development on Somerby Hill.

Best Kept Gardens Competition

The winners of this were again presented with their awards at our Annual Open Evening in September. As is customary we the judges saw some excellent gardens over the judging period.

As the competition is split into different sections, some are very hotly contested others not so. The judges are always spoilt for choice with the numerous excellent gardens on "Kenilworth Road Section" with Bridge End also hotly contested.

Once again though, the regulars presented shining examples to us all, making the Past Winners Section very competitive. The judging process for 2025 was the same as usual with three Councillors and the Clerk selecting the winners through a points system over the months July to September. The gardens are judged on well-kept, not so much on the content but that does help. The local councillors travelled around their areas and put forward nominations to the judging panel to observe them on at least three occasions during July too early September.

The 2026 competition will start in July and will run through to September, so plan carefully!

Last year's winners were:

West Sunningdale: Mr & Mrs S Beaumont,
East Sunningdale: Ms C Wilson Killarney Close,

East Harrowby Lane: Mr & Mrs E Lenton Alma Park Road,

West Harrowby Lane: Mr & Mrs E Toole Kenilworth Road.

Somerby Hill, Mr & Mrs R Crane Saltersford Rd

Villages Mr & Mrs J Smith Heath Farm Lane, Containers Section by Mr & Mrs D Maezler Alma Park Road. Past Winners Section was won by Mr & Mrs E Heighton on Harrowby lane..

Good luck for this years event.



Open Evening 2025

Last year's Open Evening held in September was again a successful and enjoyable event for the councillors. This Open Evening gives your parish councillors the chance to answer any queries that you the residents have about the projects and work that they do in a relaxed non formal atmosphere. All the projects and ongoing works are displayed for all to see.

We expect the 2026 one to be quite interesting as there will be major planning issues being discussed throughout the year, not least the Spittlegate Heath Garden Village which it is anticipated to be well over 3000 homes.

It is also a chance to celebrate all of the good things happening in the parish like the awarding of the prizes and certificates for the Tom Childs Award and the Best Kept Gardens Competition. You can read about these the articles in this newsletter. This year the Chair Cllr Alan Bowling presented the prizes, with prize winners being introduced by Pete Armstrong the Parish Clerk.

Highways etc

Like us we know you will be concerned about the state of the roads within the parish! We always report any problems reported to us on the Fixmystreet website: <https://fixmystreet.lincolnshire.gov.uk/> we request you do the same.

This year we have had problems around the parish with flooding, potholes, damaged signs and overgrown hedges. All these and more have been reported via the above method.

Flooding has occurred in the following locations: Five Gates, every time it rains the water completely covers the road, still this is unresolved. On Somerby Hill the water coming from the dyke was caused by a blocked pipe and this now has been resolved. Sandringham Drive blocked drains were finally pumped out in the autumn after months of waiting. Harrowby Hill although some work has been done this still covers the road at times and is a danger when icy! Some of the gulleys are still blocked so water bypasses them!

Damaged Road Signs: we have suffered these on the High Dyke/ Harrowby Lane junction on at least two occasions this year, luckily these have been repaired. Londonthorpe Lane signs unreadable because of being hidden by overgrown hedges and so dirty they could not be read. Londonthorpe Hill the same

problem but these have also been hit by a vehicle. Some work done but not all satisfactorily.

Potholes are everyone's favourite subject, well other than the weather! We all know them, we are reminded of them every time you see the driver in front divert from a straight line, you know what to expect! We have seen major ones on nearly all our roads and have heard of numerous damaged vehicles being reported. The road to Londonthorpe has been a blackspot for some time now, there are so many repaired patches they cover nearly all the sides of the road. Belton Lane and Harrowby Lane have seen some very deep ones in the last couple of weeks. The A52 and High Dyke seem to have suffered slightly better except for the junction which also floods to make matters worse..

Continued on the next page



Stuck in the flood water on Five Gates Lane

Continued from page 12

- Quote from LCC Highways (Winter brings many challenges for the limited resources we have, and our contractor has managed to bring in more resource, but we cannot do everything as quickly as we would all want to so we have to prioritise and this is how the policy helps and protects LCC and every council across the country. If we had significantly more funds then we would see more surfacing which would reduce the number of roads that see potholes over the Winter.)

A big thank you to Cllr C Parkinson who has worked tirelessly on our behalf on highway matters.

A special request, **please, please, please** report them as you see them on Fixmystreet..

Road Safety: On our part, we as noted elsewhere have purchased two more Speed Indicator Devices (SID's) and if found to be effective another will be purchase when budgets allow. We still continue to hold our Community Speed watch sessions when we have volunteers available.

As previously stated we need three trained people available to run a session and this we have found difficult, We would like more volunteers to come forward for training, but our problem is getting at least six to come forward so we can get a trainer to do the session.

Grantham Southern Relief Road: what can we say this saga goes on and on, the date for a completion gets put further and further back. We heard the other day this may now be 2028!

You can though from Cold Harbour Lane or the Hills & Hollows see work being done as the preparation work progresses. The road appears complete to the bridge works on either side of the Railway, but the buttresses are still being prepared



The advertisement features three logos at the top: Hw@Lincs, Lincolnshire County Council (with the tagline 'Working for a Better Future'), and NHS Lincolnshire Integrated Care Board. Below the logos is a photograph of four people in a public setting. A man with a white cane is walking, and a woman is talking to him. Another woman is in the foreground, also talking. A large blue box at the bottom of the photo contains the text 'Your experience matters'.

Do you have sight or hearing loss, or support someone who does?

We want to understand what it's like to use health and care services if you have sight or hearing loss. Your feedback will help improve services and remove barriers. If this is you, or you care for someone who does, please share your experience.

Have a conversation in person

Phone or text: **07814 939396**,
email: licb.involveus@nhs.net or complete our survey here:

lincolnshire.icb.nhs.uk/sensory-impairment