

WELBY SOLAR FARM



Island Green Power, a leading developer of renewable energy projects, is preparing a planning application for a solar farm and battery storage on land at Pasture Farm, north of Welby. Join our public consultation to review and give feedback on our proposals.

CONSULTATION WEBSITE

Full details of our proposals, including site plans, details of our efforts to ensure sensitivity to the local environment and responses to numerous frequently asked questions are available on our project website www.welbysolar.co.uk

Our website also includes an online survey. The closing date for the survey is 5th February '24.

DROP-IN SESSION

To find out more, join us at our drop-in session where our team will explain the proposals, address your questions and listen to your comments.

Wednesday 24th January 2024, 3pm to 7pm

Heydour Parish Village Hall, Aisby Road, Aisby, Grantham, NG32 3NE

The reverse side of this sheet provides an overview of the proposals.



Photo shows an example of one of Island Green Power's solar sites.

www.welbysolar.co.uk

WELBY SOLAR FARM

The UK is undergoing a significant shift in addressing its energy needs, committing to achieving 'net zero' carbon emissions by 2050. Solar power is crucial to this goal, and Pasture Farm could be a key contributor to local renewable energy production.

THE SITE

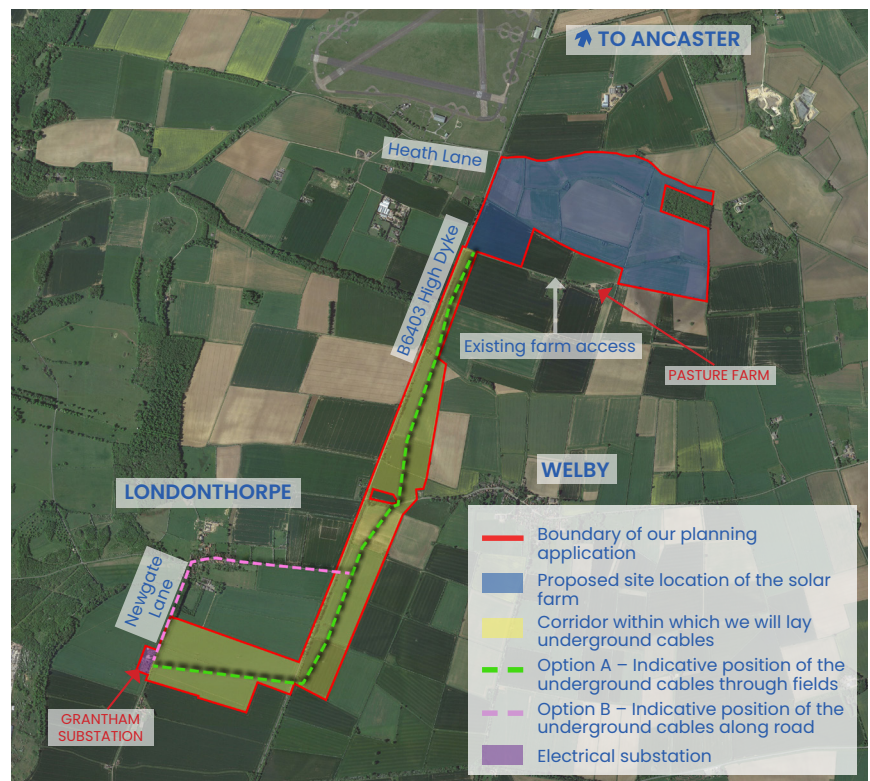
The solar farm would be located at Pasture Farm, north of Welby and to the south-east of RAF Barkston Heath. The B6403 High Dyke runs along the western boundary of the site.

THE PROPOSALS

We plan to install:

- Solar panels, laid out in rows. These would generate 46MW of clean energy.
- A battery storage compound for safely storing excess electricity.
- Additional supporting infrastructure.

The solar farm would be connected to the Grantham substation on Newgate Lane via underground cables.



LOCAL ENVIRONMENT

Committed to prioritising the local environment, we will:

- Plant new trees and hedgerows to enhance landscape character and minimise visual impact.
- Safeguard existing habitats and create new areas for wildlife to thrive.
- Ensure the land can be easily restored to agriculture after the panels are removed.

For more information visit our website or come along to our drop-in session.

www.welbysolar.co.uk